

ΣΤΑΤΙΣΤΙΚΑ ΣΤΟΙΧΕΙΑ ΤΟΥΡΙΣΜΟΥ ΑΦΙΞΕΙΣ ΤΟΥΡΙΣΤΩΝ

ARRIVALS

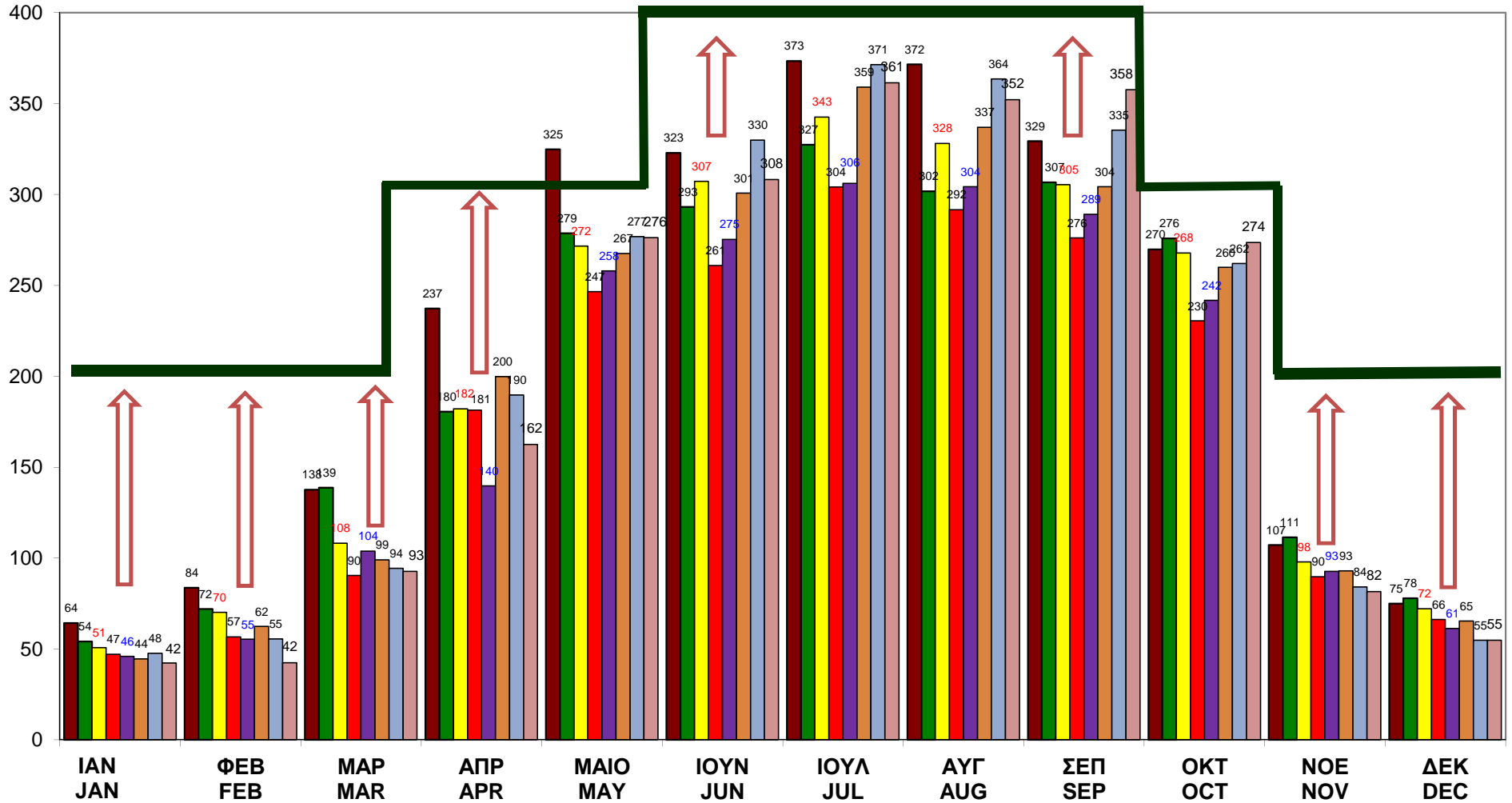
	2001	2002	2008	2009	2010	2011	2012	2013	% 13/12	% 12/11	% 11/10	% 10/09	% 09/08	% 02/01	% 13/01
Jan	64,214	54,067	50,658	47,066	45,952	44,442	47,610	42,286	-11.18	7.13	-3.29	-2.37	-7.09	-15.80	-34.15
Feb	83,569	71,950	70,140	56,626	55,250	62,294	55,420	42,327	-23.63	-11.03	12.75	-2.43	-19.27	-13.90	-49.35
Mar	137,578	138,625	108,164	90,434	103,803	98,964	94,300	92,620	-1.78	-4.71	-4.66	14.78	-16.39	0.76	-32.68
Apr	237,229	180,481	182,091	181,395	139,658	199,762	189,648	162,439	-14.35	-5.06	43.04	-23.01	-0.38	-23.92	-31.53
May	324,901	278,682	271,559	246,546	258,014	267,487	276,781	276,244	-0.19	3.47	3.67	4.65	-9.21	-14.23	-14.98
Jun	322,835	293,192	307,237	260,931	275,280	300,817	329,977	308,219	-6.59	9.69	9.28	5.50	-15.07	-9.18	-4.53
Jul	373,385	327,404	342,554	304,126	306,106	359,104	371,453	361,442	-2.70	3.44	17.31	0.65	-11.22	-12.31	-3.20
Aug	371,536	301,724	328,100	291,583	304,264	337,013	363,573	352,215	-3.12	7.88	10.76	4.35	-11.13	-18.79	-5.20
Sep	329,400	306,731	305,348	276,178	289,126	304,260	335,352	357,653	6.65	10.22	5.23	4.69	-9.55	-6.88	8.58
Oct	269,744	275,840	267,866	230,431	241,698	259,863	261,997	273,587	4.42	0.82	7.52	4.89	-13.98	2.26	1.42
Nov	107,177	111,327	97,900	89,670	92,643	92,878	84,020	81,542	-2.95	-9.54	0.25	3.32	-8.41	3.87	-23.92
Dec	74,887	77,822	72,127	66,201	61,199	65,339	54,772	54,813	0.07	-16.17	6.76	-7.56	-8.22	3.92	-26.81
TOTAL	2,696,455	2,417,845	2,403,744	2,141,187	2,172,993	2,392,223	2,464,903	2,405,387	-2.41	3.04	10.09	1.49	-10.92	-10.33	-10.79

ΠΗΓΗ: ΣΤΑΤΙΣΤΙΚΗ ΥΠΗΡΕΣΙΑ
ΖΙ/ΣΠ
20-01-14

TOURIST ARRIVALS - ΠΟΥ ΘΕΤΟΥΜΕ ΤΟΝ ΠΗΧΗ THE CHALLENGE FROM 2.5m TO 3.5m

2001 - 2002 - 2008 - 2009 - 2010 - 2011 - 2012 - 2013

Thousands



ΠΗΓΗ/SOURCE: ΚΟΤ/ΣΤΟ 2001-2013
ΖΙ/SP - 20/01/2014

■ total 2001
 ■ total 2002
 ■ total 2008
 ■ total 2009
 ■ total 2010
 ■ total 2011
 ■ total 2012
 ■ total 2013